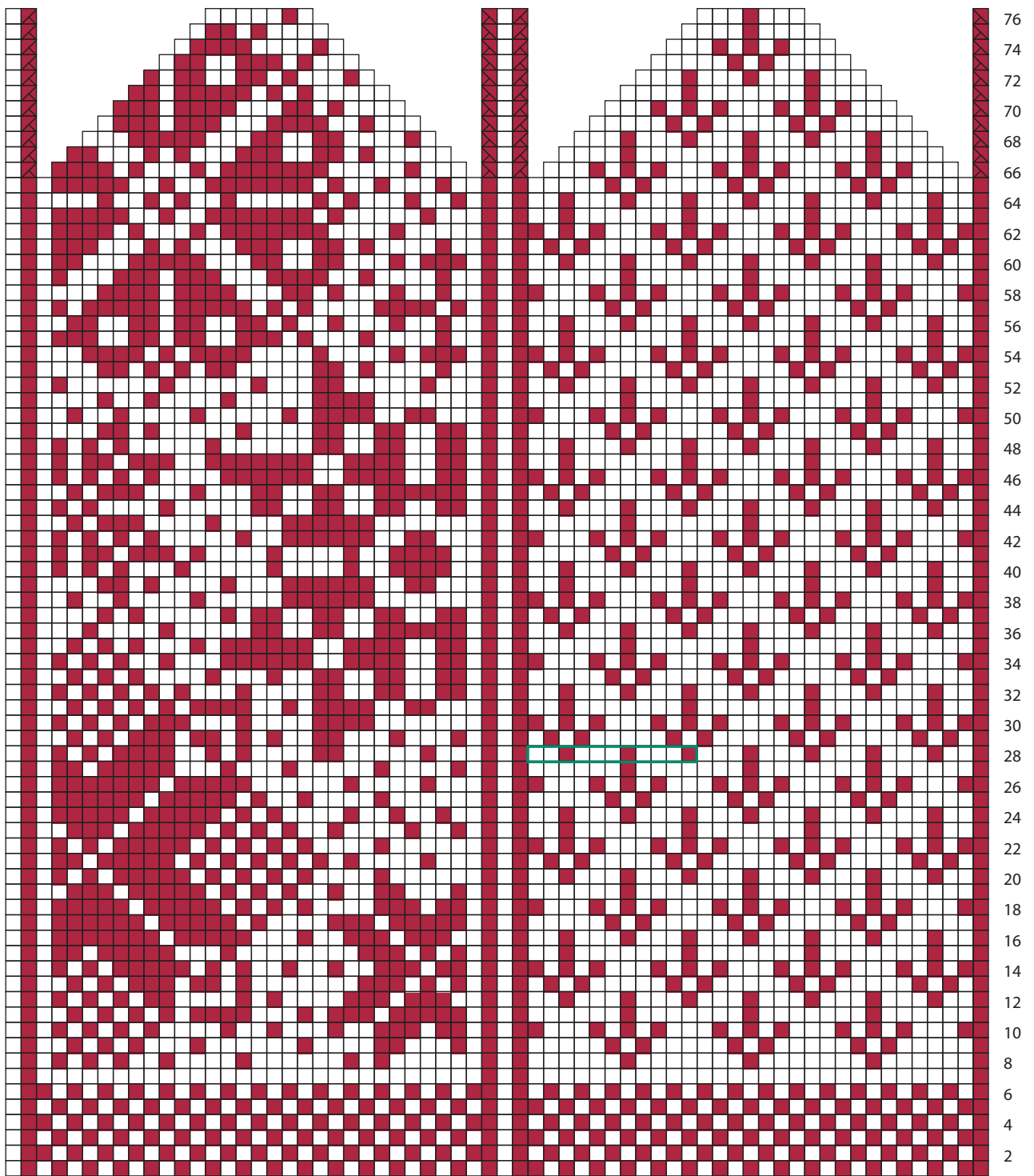
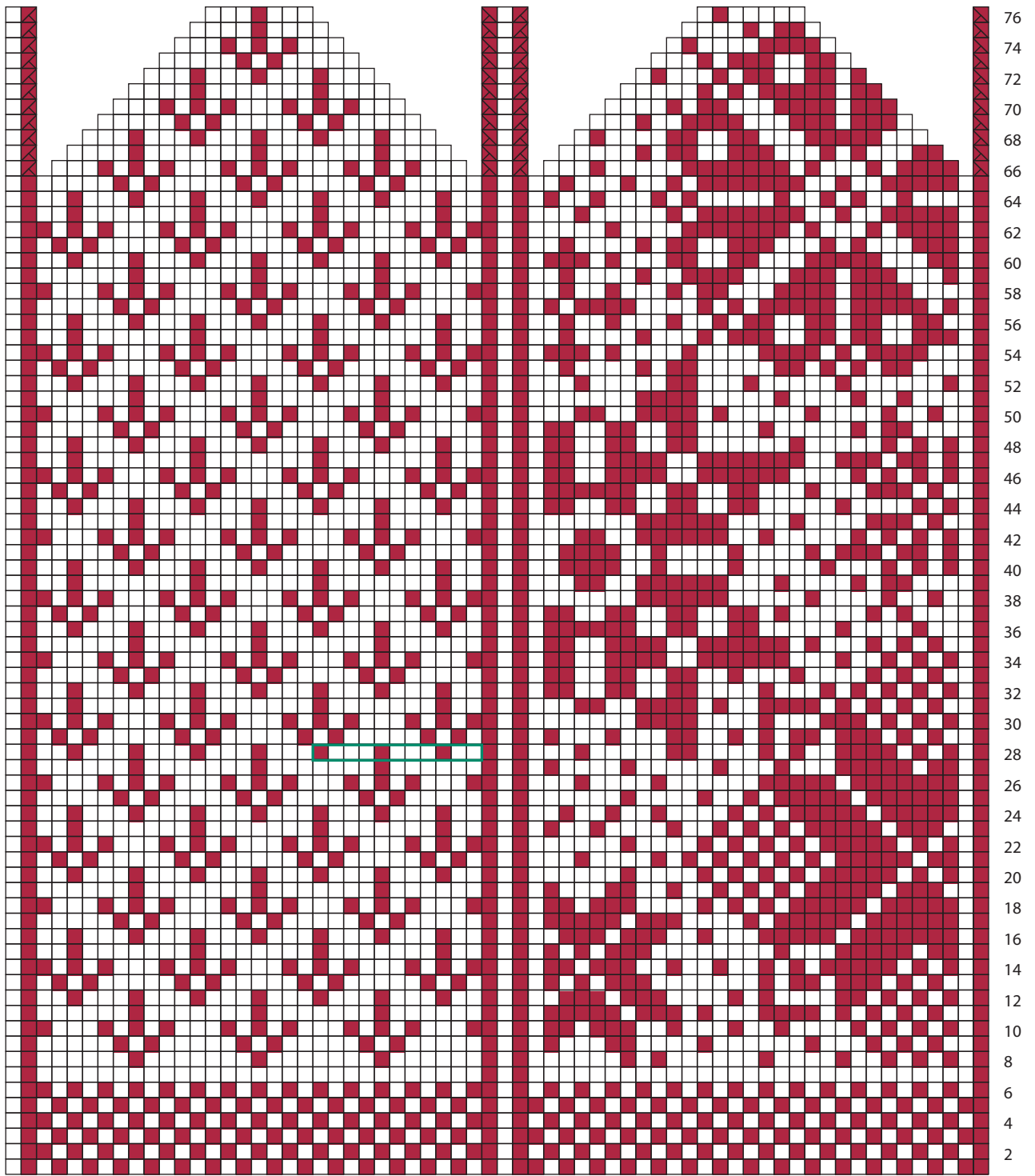


Size Small (left)



<b>Size</b>	Approximately 8 ¾" palm circumference by 9 ¼"
<b>Yarn</b>	St-Denis Nordique (100% wool; 150 yd [137 m]/50 g): 1 ball each MC and CC
<b>Needles</b>	Set of 5 double-pointed needles (dpm) in Size US 8 (5 mm) OR SIZE NEEDED TO OBTAIN GAUGE
<b>Notions</b>	Stitch markers
<b>Gauge</b>	16 sts and 18 rnds = 2" (5 cm) in stranded colour St st

Size Small (right)



Thumb Placement